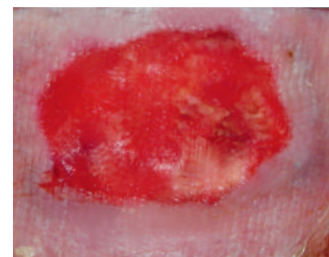


L-Mesitran®

Wound Care Protocol using L-Mesitran™ honey dressings

Antibacterial - Remove malodour - Stimulate cellgrowth (fibroblast/keratinocytes) - Reduce scarring

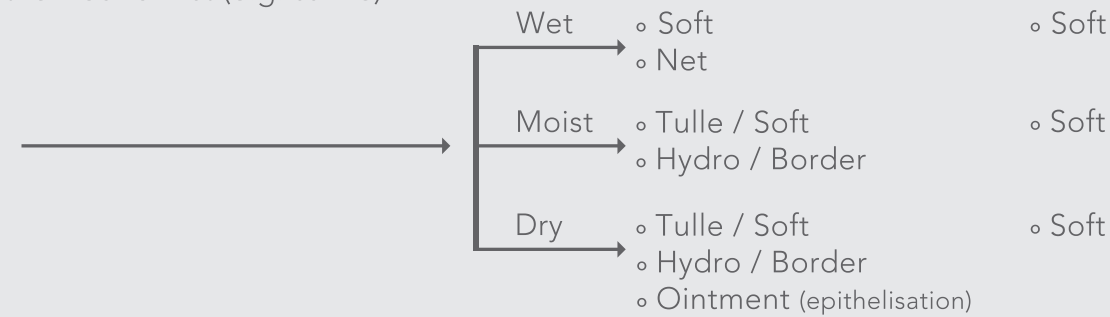
CHRONIC AND ACUTE WOUNDS



The wound is RED

- protect
- moist environment
- bacterial balance
- stimulate epithelisation

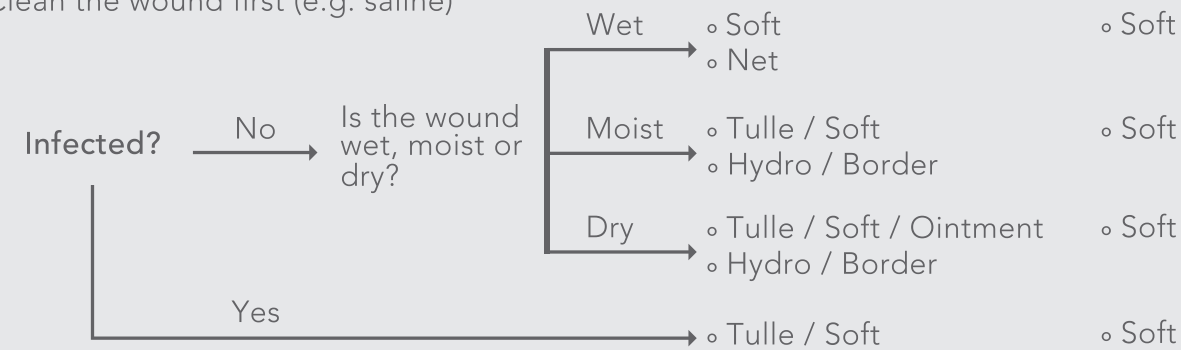
Clean the wound first (e.g. saline)



The wound is YELLOW

- debride
- remove bacteriae
- moist environment
- stimulate healing

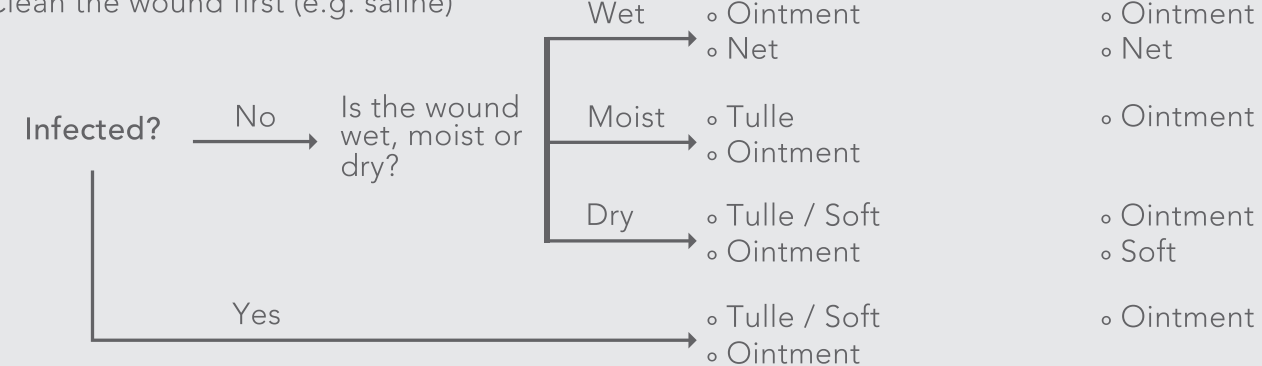
Clean the wound first (e.g. saline)



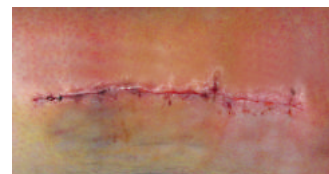
The wound is BLACK

- cleanse
- remove necrosis
- remove bacteriae

Clean the wound first (e.g. saline)



POST-OPERATIVE WOUNDS



L-Mesitran Ointment:

- Wound ointment with medical honey, Medilan, Aloë, Calendula, ZnO and anti-oxidants vitamins C and E
- Indicated for the removal of necrosis and debris (cleaning function)
- Cover with alginate, hydrofiber, foam or compress
- Replace the ointment after 1-3 days



L-Mesitran Soft

- Woundgel with medicinal honey, Medilan, PEG and anti-oxidants vitamins C and E
- Cover with foam, alginate, hydrofiber or compress
- Indicated for all superficial and deep wounds (antibacterial and stimulates wound healing)
- Replace the gel after 1-3 days



L-Mesitran Tulle

- Hydro-active synthetic sheet with L-Mesitran Soft
- Does not adhere to the wound
- Indicated for wounds without or moderate exudates
- Cover with absorbent dressing, fixate with regular gauze
- Replace the dressing after 3-5 days



L-Mesitran Hydro

- Hydro-active dressing with medicinal honey, polymers and water
- Indicated for superficial wounds
- Self adhering, can be fixated with foil, wide fixation dressing or (adhesive) tape
- Replace the dressing after 3-5 days



L-Mesitran Border

- Hydro-active dressing with medicinal honey, polymers and water with an adhesive border
- Indicated for superficial wounds
- Self-adhesive, showering or swimming is possible
- Replace the dressing after 3-5 days



L-Mesitran Net

- Hydro-active wound contact layer with medicinal honey, polymers and water
- Indicated for wounds with moderate to heavy exudates
- Cover with absorbent dressings or compresses and fixate with regular adhesive gauzes
- Replace the dressing after 3-5 days

